

**PART NUMBER CODING**

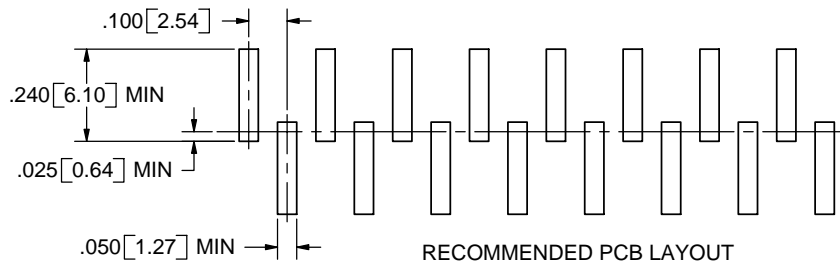
**G C SFBN - M30**

NUMBER OF POSITIONS PER ROW

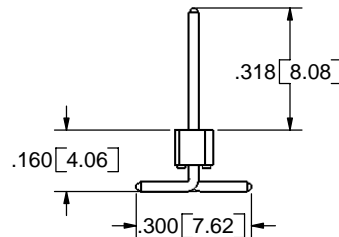
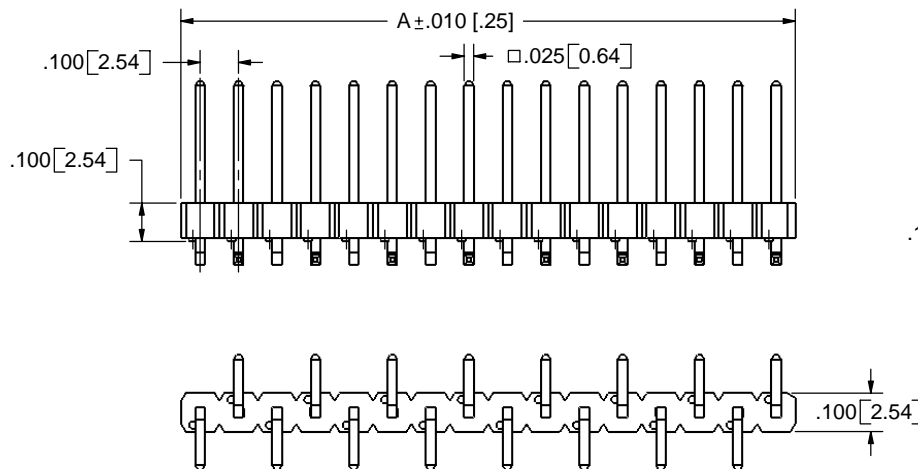
**PLATING**

ALL PLATINGS HAVE .000050" NICKEL UNDERPLATE

	<b>CONTACT</b>	<b>TERMINATION</b>
B =	.000010" GOLD	.000100" PURE TIN, MATTE
C =	.000030" GOLD	.000100" PURE TIN, MATTE
E =	.000100" PURE TIN, MATTE OVERALL	



RECOMMENDED PCB LAYOUT



**REVISIONS**

REV.	ECO. NO	DESCRIPTION	DATE	BY
A	474	ORIGINAL RELEASE	9/19/03	MNH
B	841	REVERSE BENDS	11/29/05	HT

PART NUMBER	A
G_C01SFBN-M30	0.100 [2.54]
G_C02SFBN-M30	0.200 [5.08]
G_C03SFBN-M30	0.300 [7.62]
G_C04SFBN-M30	0.400 [10.16]
G_C05SFBN-M30	0.500 [12.70]
G_C06SFBN-M30	0.600 [15.24]
G_C07SFBN-M30	0.700 [17.78]
G_C08SFBN-M30	0.800 [20.32]
G_C09SFBN-M30	0.900 [22.86]
G_C10SFBN-M30	1.000 [25.40]
G_C11SFBN-M30	1.100 [27.94]
G_C12SFBN-M30	1.200 [30.48]
G_C13SFBN-M30	1.300 [33.02]
G_C14SFBN-M30	1.400 [35.56]
G_C15SFBN-M30	1.500 [38.10]
G_C16SFBN-M30	1.600 [40.64]
G_C17SFBN-M30	1.700 [43.18]
G_C18SFBN-M30	1.800 [45.72]
G_C19SFBN-M30	1.900 [48.26]
G_C20SFBN-M30	2.000 [50.80]
G_C21SFBN-M30	2.100 [53.34]
G_C22SFBN-M30	2.200 [55.88]
G_C23SFBN-M30	2.300 [58.42]
G_C24SFBN-M30	2.400 [60.96]
G_C25SFBN-M30	2.500 [63.50]
G_C26SFBN-M30	2.600 [66.04]
G_C27SFBN-M30	2.700 [68.58]
G_C28SFBN-M30	2.800 [71.12]
G_C29SFBN-M30	2.900 [73.66]
G_C30SFBN-M30	3.000 [76.20]
G_C31SFBN-M30	3.100 [78.74]
G_C32SFBN-M30	3.200 [81.28]
G_C33SFBN-M30	3.300 [83.82]
G_C34SFBN-M30	3.400 [86.36]
G_C35SFBN-M30	3.500 [88.90]
G_C36SFBN-M30	3.600 [91.44]

**NOTES:**

1. INSULATOR MATERIAL: PA9T.
2. CONTACT MATERIAL: PHOSPHOR BRONZE
3. PLATING: SEE TABLE
4. OPERATING TEMPERATURE: -65°C TO +125°C
5. PROCESSING TEMPERATURE: 260°C MAX FOR 120 SECS MAX.
6. UL FLAMMABILITY: 94V-0
7. VOLTAGE RATING: 600 VDC MINIMUM AT SEA LEVEL.
8. CURRENT RATING: 3 AMP
9. INSULATION RESISTANCE: 5000 MEGA OHMS.
10. MODIFICATION: SURFACE MOUNT.



**RoHS COMPLIANT**

**CUSTOMER COPY**

UNLESS OTHERWISE SPECIFIED: DIMENSIONS ARE IN INCHES(MM)		DATE	NAME
TOLERANCES: ANGULAR: ± 1° XX ± .02 [508] .XXX ± .005 [1270] XXXX ± .0005 [0127] PARENTHEICAL INFORMATION IS FOR REFERENCE ONLY			
THE INFORMATION HEREIN CONTAINS PROPRIETARY RIGHTS OF SULLINS ELECTRONICS AND IS NOT TO BE REPRODUCED, USED OR DISCLOSED TO OTHERS FOR ANY PURPOSE EXCEPT AS SPECIFICALLY AUTHORIZED IN WRITING BY SULLINS ELECTRONICS.		SULLINS ELECTRONICS	
INTERPRET DIMENSIONS AND GEOMETRIC TOLERANCING PER: ANSI Y14.5-1984		HEADERS, .100 CC	
SIZE	DWG. NO.	REV	
C	C10584	B	
SCALE: 4:1		SHEET 1 OF 1	